

■ Dimensions: (mm)

Part No.	A	B	C	D	E
DJNR 6028	6.0 ± 0.2	6.0 ± 0.2	2.8 Max.	1.35 ± 0.2	4.0 ± 0.2

■ Series List

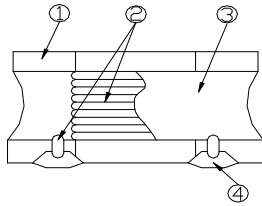
No.	Part No.	L (μ H)	SRF Min. (MHz)	RDC $\pm 30\%$ (Ω)	Isat Max. (mA)	Irms Max. (mA)
1	DJNR6028-0R9-S	0.9	90	0.013	6700	4600
2	DJNR6028-1R5-S	1.5	78	0.016	5100	4200
3	DJNR6028-2R2-S	2.2	68	0.020	4200	3700
4	DJNR6028-3R0-S	3.0	55	0.023	3600	3400
5	DJNR6028-4R7-S	4.7	39	0.031	2700	3000
6	DJNR6028-6R0-S	6.0	30	0.040	2500	2500
7	DJNR6028-100-S	10	20	0.065	1900	1900
8	DJNR6028-150-S	15	17	0.095	1600	1800
9	DJNR6028-220-S	22	12	0.135	1300	1400
10	DJNR6028-330-S	33	10	0.220	1100	1100
11	DJNR6028-470-S	47	8	0.300	1000	920
12	DJNR6028-680-S	68	5	0.420	800	770
13	DJNR6028-101-S	100	3	0.600	650	660

1. Test Frequency : 100KHz
2. Tolerance : N \pm 30% ; M \pm 20%
3. Isat : The value of current causes a 30% inductance reduction from initial value.
4. Irms : The value of current causes a 40°C temperature rise.
5. Rated Current: Either Isat or Irms whichever is smaller.
6. Operating Temperature Range : -25°C to +125°C (Including self-temperature rise)
7. Storage Temp. Range: -40°C to +85°C

□ PACKAGE

Type	DJNR 6028
Q'TY/Reel	2000

■ Structural Drawing

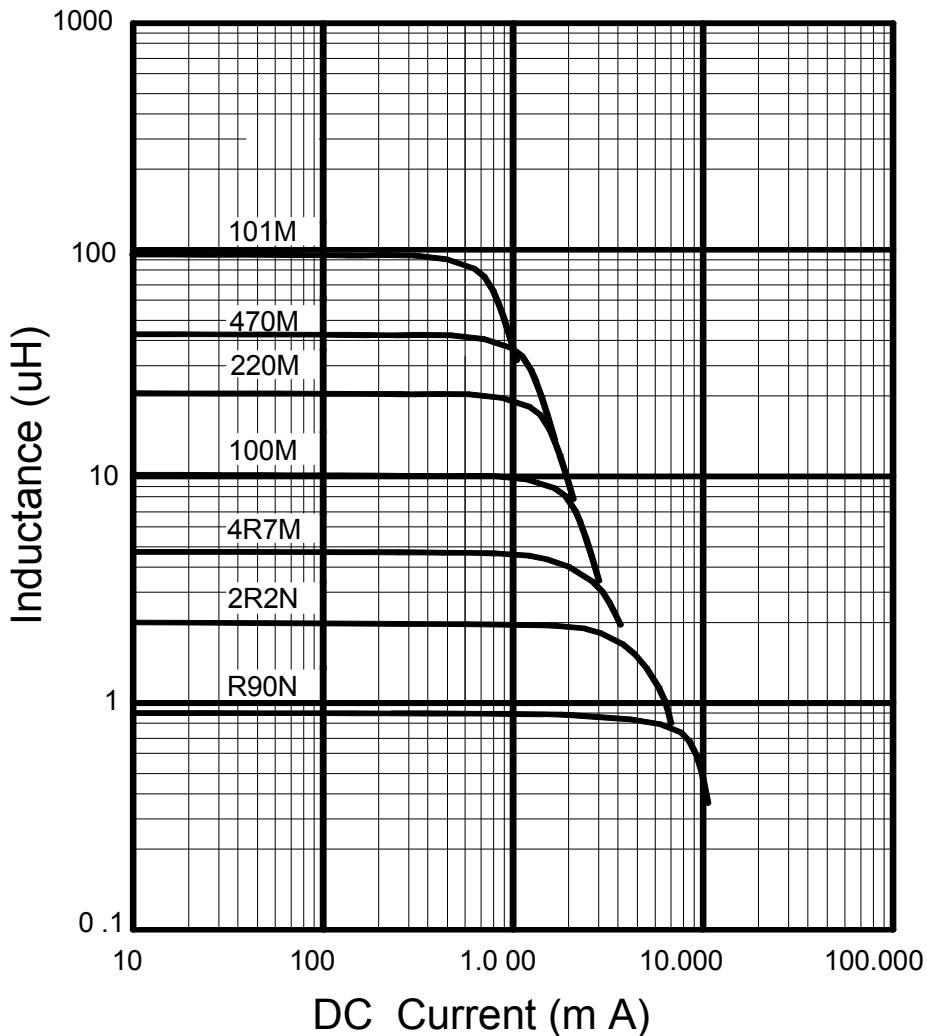


(Magnetic Shielded Type)

- | | | |
|--------------------------|---|----------|
| ϵ Ferrite core. | Ni-Zn ferrite | |
| $\&$ Winding wire | Polyurethane-copper wire | |
| ● Over-coating resin. | Epoxy resin, containing ferrite powder | |
| ○ Electrode | External electrode (substrate) | Ag |
| | External electrode (base plating) | Ni-Sn |
| | External electrode (top surface solder coating) | Sn-Ag-Cu |

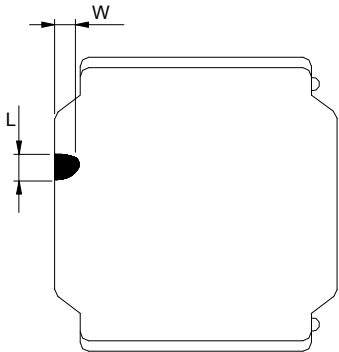
■ Electrical Curve

Inductance vs. DC Current



■ Core Chipping

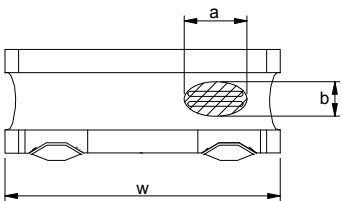
The appearance standard of the chipping size in top side, of bottom side ferrite Core is following dimension



L	W
1.5mmMax.	1.5mmMax.

■ Exposed wire tolerance limit of coating resin part on product side

Size of exposed wire occurring to coating resin is specified below.



- ① Width direction (dimension a): Acceptable when $a \leq w/2$
Nonconforming when $a > w/2$
- ② Length direction (dimension b): Dimension b is not specified.
- When total area of exposed wire occurring to each sides is not greater than 50% of coating resin area, that is acceptable.

X-ON Electronics

Largest Supplier of Electrical and Electronic Components

Click to view similar products for [Ferrite Beads](#) category:

Click to view products by [Ferrocore](#) manufacturer:

Other Similar products are found below :

[2943778301](#) [BMB1J0120BN3JIT](#) [82350120560](#) [0261014605](#) [2643066902](#) [3061000011](#) [2673045901](#) [2643083601](#) [2643074901](#) [4361142521](#)
[4078078621](#) [4078044821](#) [4078033621](#) [CZB2BFTTE121P](#) [BMB2A0120AN2](#) [BMB1J0200BN3JIT](#) [EMI0805R-220](#) [74279250](#) [7427924](#)
[CZB1JGTTD202P](#) [MAF0603GWY551AT000](#) [MAF1005GWZ102AT000](#) [BLM18HE152SH1D](#) [2944778302](#) [BLM02PX600SN1D](#) [SMB2.5-1](#)
[EMI1206R-600](#) [BLM02KX180SN1D](#) [BLM02BC100SN1D](#) [BLM02KX100SN1D](#) [BLM02BB101SN1D](#) [BLM02BC220SN1D](#)
[BLE32PN260SH1L](#) [BLE32PN260SN1L](#) [BLE32PN260SZ1L](#) [74275013](#) [7427503](#) [BLM18HE601SH1D](#) [BLM15BD152SN1D](#)
[BLM15BD152SZ1D](#) [BLE18PS080SZ1D](#) [BLM21PG221BH1D](#) [WLBD1005HCU330TL](#) [BLM21AG471BH1D](#) [BLE18PS080BH1D](#)
[BLM21AG331BH1D](#) [BLM21PG300BH1D](#) [BLM21PG600BH1D](#) [BLM03HB401SZ1D](#) [BLM03HB401SN1D](#)